

PREFACE

The Beckwourth Trail Driving Guide was published to provide current information so that emigrant trail enthusiasts will be able to easily follow the trail from marker to marker.

Fifty markers have been installed at significant locations along the trail stretching from Sparks, Nevada to Marysville, California.

The Beckwourth Trail markers are fabricated from steel railroad rails. A cross member is welded at the top of the vertical rail post to form a T post. Emigrant diary quotes are inscribed on the aluminum plate that is fastened to the cross member. The markers stand about four feet above the ground.

For each marker, the Guide includes a replica of the inscription plate, the driving instructions for locating it, and the GPS coordinates for each marker location. Maps are included which show the driving route and the approximate location of the trail. This simplified Guide does not include the photos, trail descriptions or numerous diary quotes that are found in the full size guidebooks. For this reason, it is published in an easy to handle 6" x 9" format rather than the standard 8.5" x 11" format of the full size Emigrant Trails West Series guides.

MARKER B-19

BECKWOURTH TRAIL—GRIZZLY RIDGE ASCENT

"STARTED EARLY TO CROSS THE MOUNTAINS. HAD A VERY STEEP ROAD, STEEPEST I EVER SAW, TOOK TILL NOON TO GO 2 MILES. WHEN WE GOT TO THE TOP IT WAS THE MOST SIGHTLY PLACE I EVER SAW."

— CHESTER SMITH, SEP 26, 1852

How To Find:

From Marker B-18, at the T road junction, turn left.

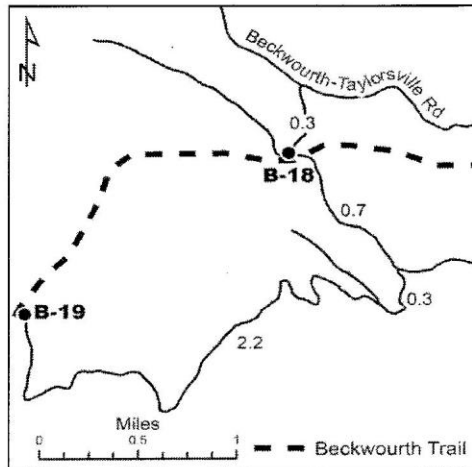
Go 0.7 mile to a road on the right.

Turn right. Go 0.3 mile to a road on the right.

Continue straight ahead 2.2 miles to a barely visible, overgrown dirt road on the right.

This road junction is about 60 yards

before the road curves sharply to the left.



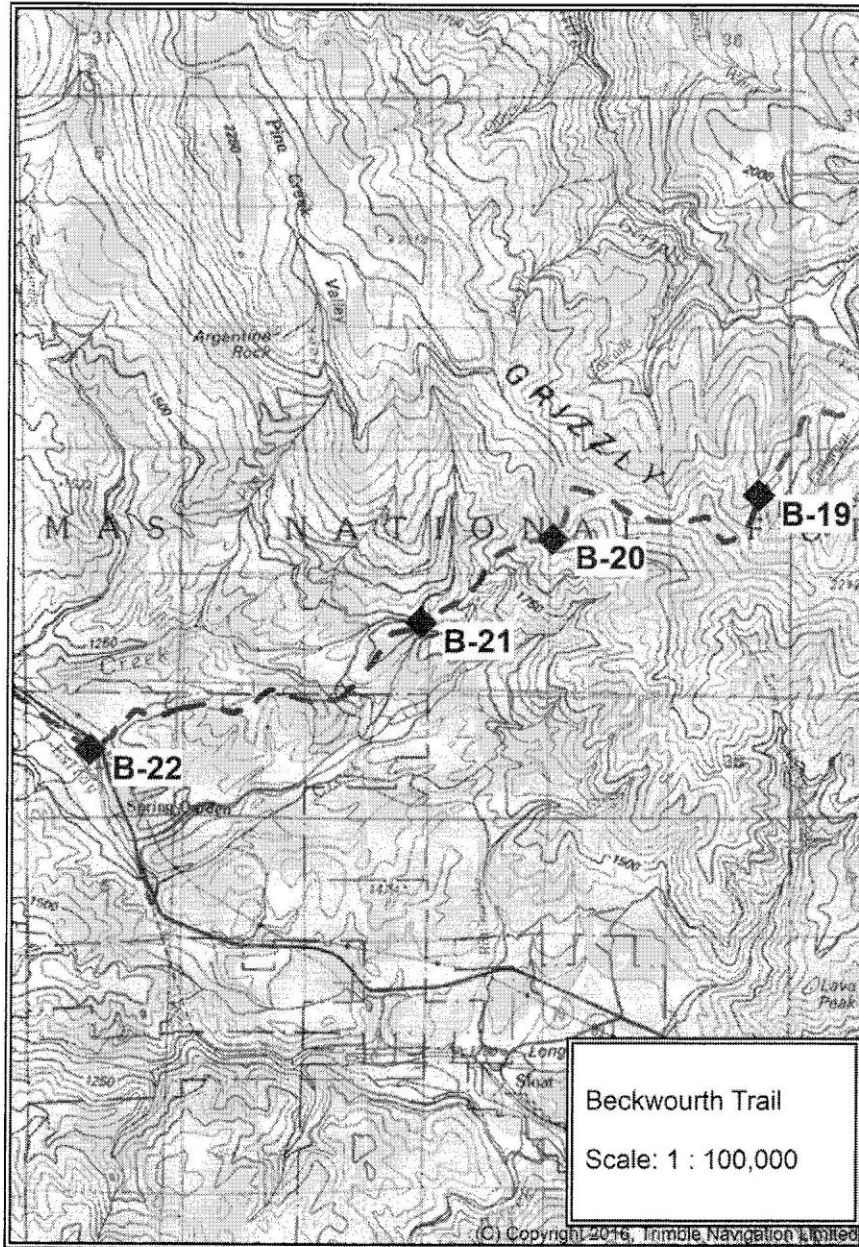
Walk about 700 yards north down the dirt road to the marker on the left.

The marker is at the upper end of the open ridge top near 3 pine trees and a small deck of old logs.

LAT/LONG: N 39.93317°, W 120.68787°

UTM: 10S 697660 E, 4422704 N

MAP 12 - Marker B-19 to Marker B-22



MARKER B-47

BECKWOURTH TRAIL—BERRY CREEK

"WE LEFT HERE AT HALF PAST FOUR INTENDING TO GO AS FAR AS
BIDWELL BAR WE PASSED ON A BRIDGE WHICH CROSSES A POND MADE
BY DAMMING A STREAM FOR THE PURPOSE OF RUNNING [A] SAWMILL
WHICH IS SITUATED HERE." – JAMES WOODWORTH, AUG 19, 1853

How To Find:

From Marker B-46, continue 2.0 miles west on the Oroville-Quincy Highway to the wide area on the left by the pond, Madrone Lake.

Park. Walk back up the paved road 75 yards to the marker on the left behind the wire fence and across from the yellow 25 mph sign.

The trail is located west of the marker where the small valley comes in from the right just before the bridge. The Berry House was in business here in 1851 and a small sawmill commenced operations here in 1852.

LAT/LONG: N 39.64947°, W 121.40702°

UTM: 10 S 636768 E, 4389874 N