

Update for
A Guide To The Yreka Trail
Second Edition, 2019

Page 38 - In the How To Find section, replace the existing Lat/Long coordinates with the following coordinates: 41° 41.675'N, 121° 59.263'W

Page 40 - In the How To Find section, replace the existing Lat/Long coordinates with the following coordinates: 41° 40.055'N, 121° 59.562'W

Page 45 - In the How To Find section, replace the existing Lat/Long coordinates with the following coordinates: 41° 38.734'N, 122° 04.898'W

Two additional markers have been installed on the 1852 route of the trail.

New Marker Y-12A

<p>YREKA TRAIL-SPLENDID PINE TIMBER</p> <p>“SUN. PASSED THROUGH SPLENDID PINE TIMBER & FUR & SPRUCE PASSED THE DIVIDING RIDGE OF THE SHASTA MOUNTAINS VERRY ROUGH & BAD ROADS THIS AFTERNOON 18 MILES TODAY NOT SO WELL PM HINSDALE TRUMAN SHEPARD, SEP 5, 1852</p>
--

HOW TO FIND: From Marker Y-12, return to Hwy 97. Turn right. Go 2.3 miles to a paved road, FS Rd # 19, on the left. Turn left.

Go 10.1 Miles, passing a Sno-Park area on the right at about 3 miles, to a road junction.

Turn left. Go 2.0 miles on the gravel road down Pomeroy Creek to the marker on the right just before you get to the bridge over Butte Creek.

Coordinates: 41° 31.255'N, 122° 03.165'W

New Marker Y-12B

YREKA TRAIL-A SPLENDID CITE

HERE WE CAME IN SITE OF THE BUTE. IT IS A SPLENDID CITE. WENT
DOWN THE HILL ON TO THE FLATS SPENCER & BRILL SHOT A DEER”

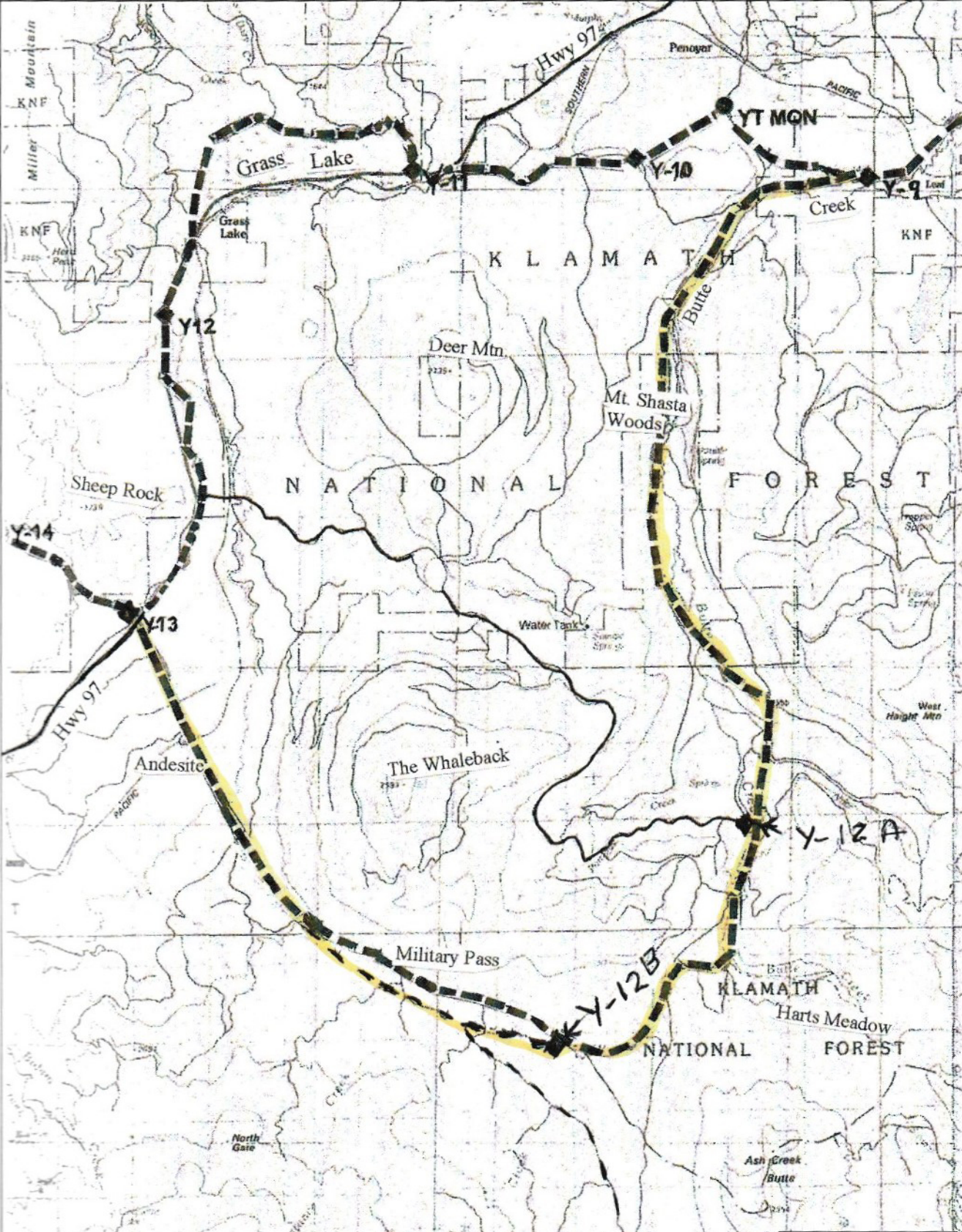
-HINSDALE TRUMAN SHEPARD, SEP 6, 1852

HOW TO FIND: From Marker Y-12 A, return to the road junction. Turn left. Go 5.1 miles on FS Rd # 19 to a 4-way road junction. Turn right. Go 20 feet to the marker on the right.

Coordinates: 41° 28.601'N, 122° 05.201'W

From marker Y-12B, go west 1/4 mile to the Military Pass Road (43N19) and turn right. Follow this road northwest for about 11 miles to marker Y-13 on Hwy 97.

MAP 6



YREKA TRAIL

- ORIGINAL TRAIL
- USED TRAIL
- - - - - APPROXIMATE TRAIL